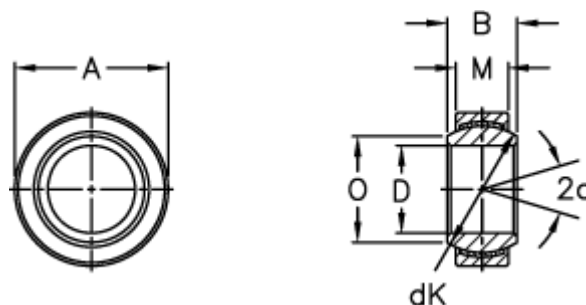


Article number: 03441080

Description: Fluro Rod end GE 80EC-2RS

Measures



A = 120 0 -0,015

B = 55

D = 80 0 -0,015

dK = 105

Dynamic load C (kN) = 750

M = 45

O = 89.4

Static load C0 (kN) = 1500

Tilt angle = 6

Weight = 2200